

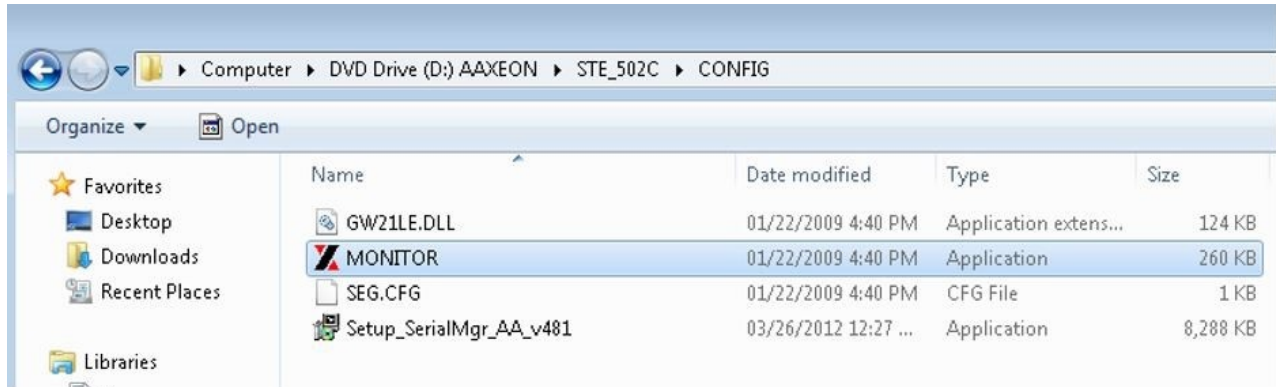
Serial Over IP Device Setup with IP Address Only

Last Modified on 03/14/2023 11:26 am CDT

The following document details the setup process for Serial Over IP devices using only the IP Address.

Setup

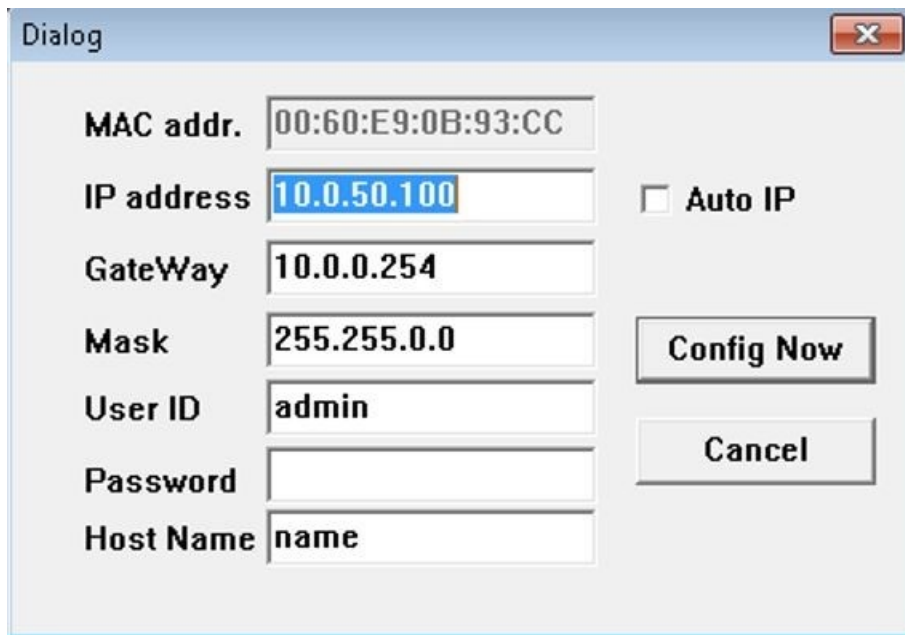
After the device is plugged into the network, insert the DVD into the machine. Open the Devolinx device folder, and navigate to the *CONFIG* folder. Double-click the *MONITOR* file.



Select the device, and choose **Config**.



Edit the information on the *Dialog* window, and designate fields as desired to match the domain's network. Set up a static IP address.



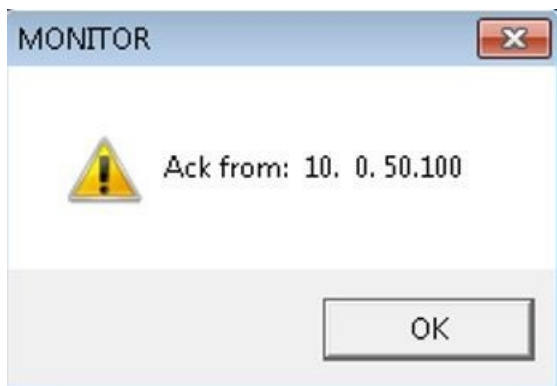
A dialog box titled "Dialog" with a close button (X) in the top right corner. It contains several input fields and two buttons. The fields are: "MAC addr." with value "00:60:E9:0B:93:CC", "IP address" with value "10.0.50.100", "GateWay" with value "10.0.0.254", "Mask" with value "255.255.0.0", "User ID" with value "admin", "Password" (empty), and "Host Name" with value "name". To the right of the "IP address" field is a checkbox labeled "Auto IP" which is unchecked. Below the fields are two buttons: "Config Now" and "Cancel".

MAC addr.	00:60:E9:0B:93:CC	
IP address	10.0.50.100	<input type="checkbox"/> Auto IP
GateWay	10.0.0.254	
Mask	255.255.0.0	
User ID	admin	
Password		
Host Name	name	

Config Now

Cancel

The Devolinx device will beep several times, and the window below displays that changes were made.



A dialog box titled "MONITOR" with a close button (X) in the top right corner. It contains a yellow warning triangle icon with an exclamation mark inside. To the right of the icon is the text "Ack from: 10. 0. 50.100". At the bottom center is an "OK" button.

! Ack from: 10. 0. 50.100

OK

Log into the web configuration of the serial server using the static IP address previously assigned. Configure the COM1 settings to match the scale head.

TCP Server
 TCP Client
 UDP

Enable VirtualCOM for Serial/IP	<input checked="" type="checkbox"/> Enable
Pair Connection	<input type="checkbox"/> Enable

Enable VirtualCOM Authentication (Note: An empty password will fail to authenticate)	<input type="checkbox"/> Enable
Local Listening Port	4660
IP Filter	<input type="checkbox"/> Enable, Source IP: 0.0.0.0
Idle Time Before Sending TCP Alive Packet	4 *10 sec (0~255, 0:Disable)
TCP Inactivity Time Before Disconnect	0 sec (0~255, 0:Disable)

COM1

To configure COM port parameters.

Serial Interface	RS-232
Alias Name	COM 1
Baud Rate	9600
Parity	<input checked="" type="radio"/> None <input type="radio"/> Odd <input type="radio"/> Even <input type="radio"/> Mark <input type="radio"/> Space
Data Bits	<input type="radio"/> 7 bits <input checked="" type="radio"/> 8 bits
Stop Bits	<input checked="" type="radio"/> 1 bit <input type="radio"/> 2 bits
Flow Control	<input checked="" type="radio"/> None <input type="radio"/> RTS/CTS <input type="radio"/> DTR/DSR <input type="radio"/> Xon/Xoff

Empty Serial Buffer When TCP Connection is Established	<input checked="" type="radio"/> YES <input type="radio"/> No, (Default: Yes)
Data Packet Delimiter	<input checked="" type="radio"/> Inter-character Time Gap : 2 msec (0~30000, 0:Disable)
	<input type="radio"/> Characters : 0x0d ("0x" + Hex Code, e.g. "0x0d" or "0x0d0a")
COM Type Selection	<input checked="" type="radio"/> RS232 <input type="radio"/> RS485 <input type="radio"/> RS422

The *COM Type Selection* is based on the Scale used. Refer to Scale Manual as to what type to select.

On the *Agvance Scale Interface / Setup / Configure Scale Interface / Scale tab*, edit the *Scale Port* selection to *Ethernet*, and enter the *IP Address* and *Port Number* to match the designated IP Address and Port of the Serial Over IP device.

Scale		
General Printer		
<Default Location> <input type="text"/>		
Scale Port	IP Address	Port Number
Ethernet	<input type="text"/>	<input type="text"/>