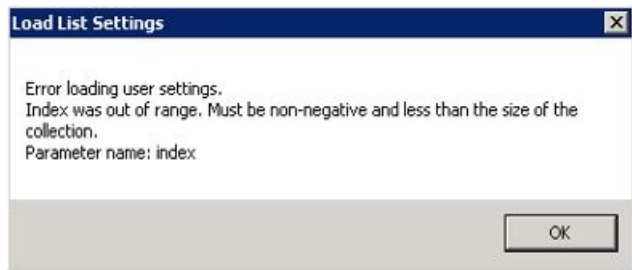
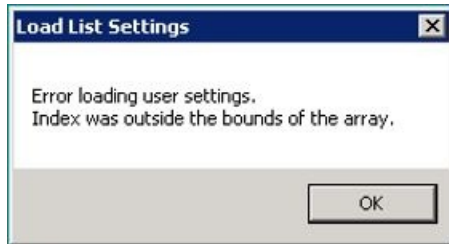


# Error Loading User Settings

Last Modified on 12/20/2022 8:37 am CST

Q. What happens if users receive a *Load List Settings* error message. See examples below.



A. This error message can occur in a few situations. It can happen if a user has added or deleted a column from a list box or grid since it was last used or after an update is installed if the programmers have added or removed a column from a list box or grid. It can also occur at the product selection screen if a product attribute has been added or deleted.

To fix the error, click **OK** on the error message and the list box or grid will load. Right-click on any column heading in the grid or list box and choose the option called *Make This Layout My Default*.