

Agvance Grain Scale Interface Setup for the Perten AM 5200-A Moisture Tester

Last Modified on 03/01/2022 4:30 pm CST

Overview

The Perten AM 5200-A Moisture Tester has the ability to communicate with the Scale Ticket Interface through the PC's Com port. The Scale Interface will read in the moisture and test weight values from the Perten AM 5200-A Moisture Tester

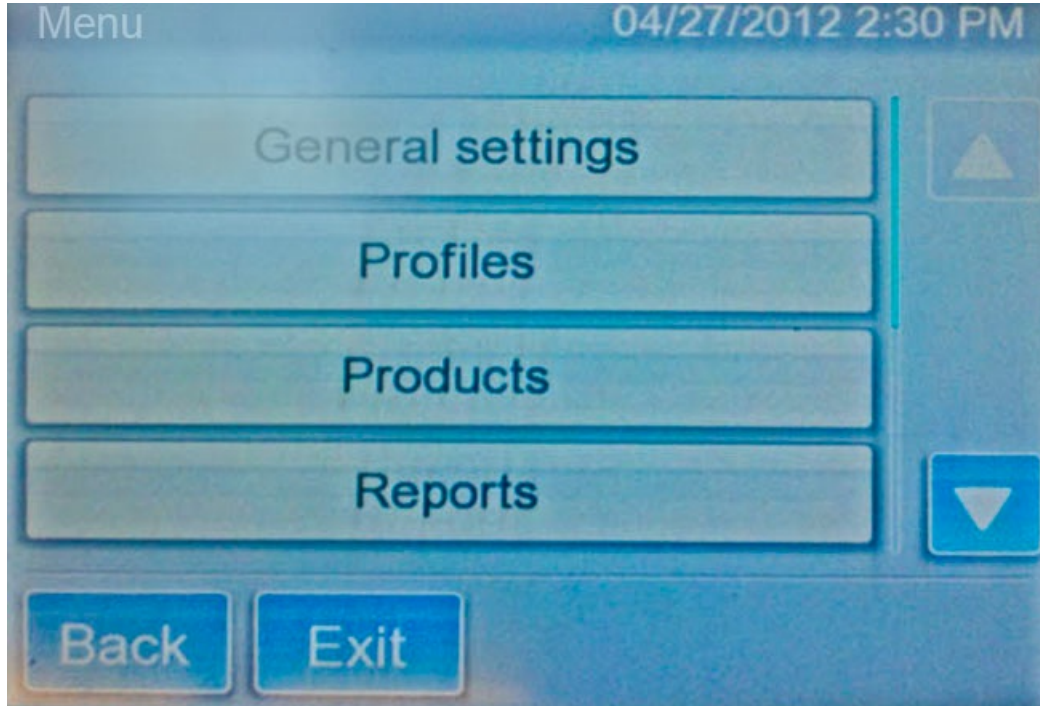
Setup

Moisture Tester Directly Into The PC

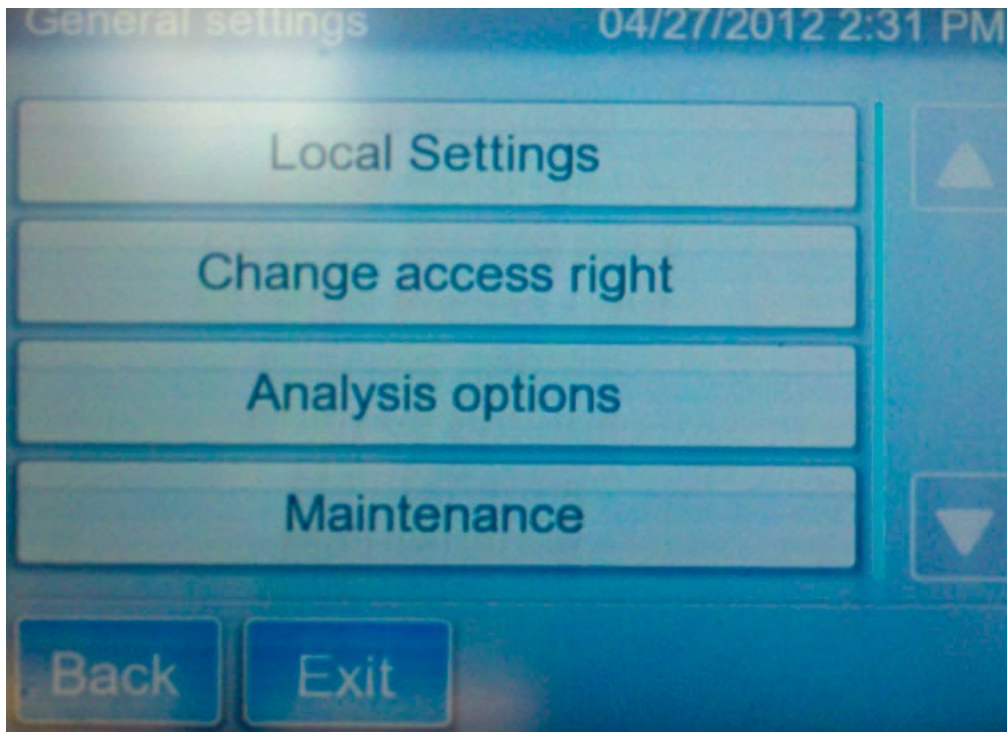
The Moisture Tester can be used directly with the PC by plugging a null modem connector into the back of the PC, then plug a cable into the null modem and run to the serial to USB converter (one bought only from Perten). The other end of the converter plugs into a com port on the back of the moisture tester.

Perten AM 5200-A Setup to Interface with Agvance Grain

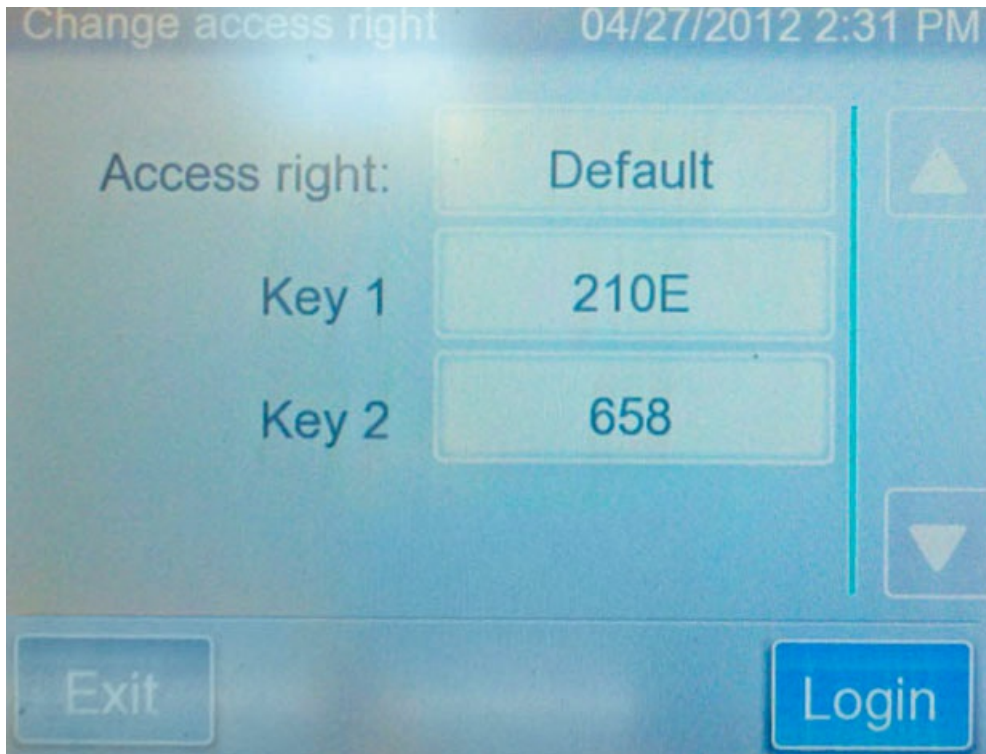
From the Perten main menu, select the General settings menu item



Next select Change access right



Once in the Change access right tap on Access right = Default



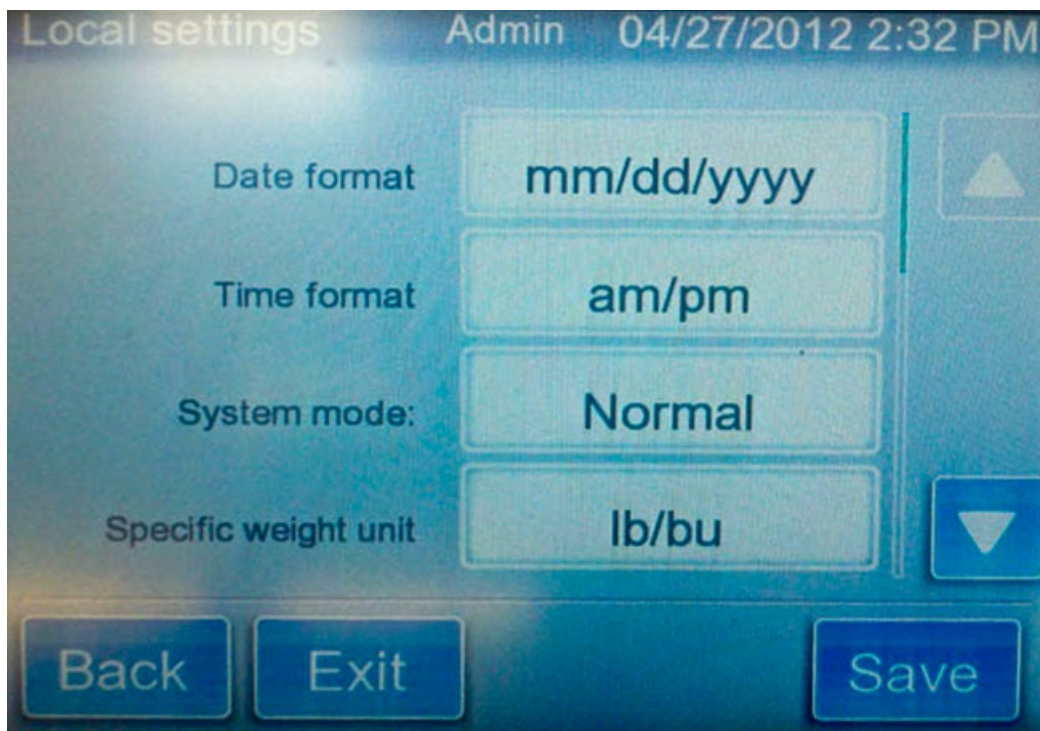
A key board will come up to type the Administrator password in



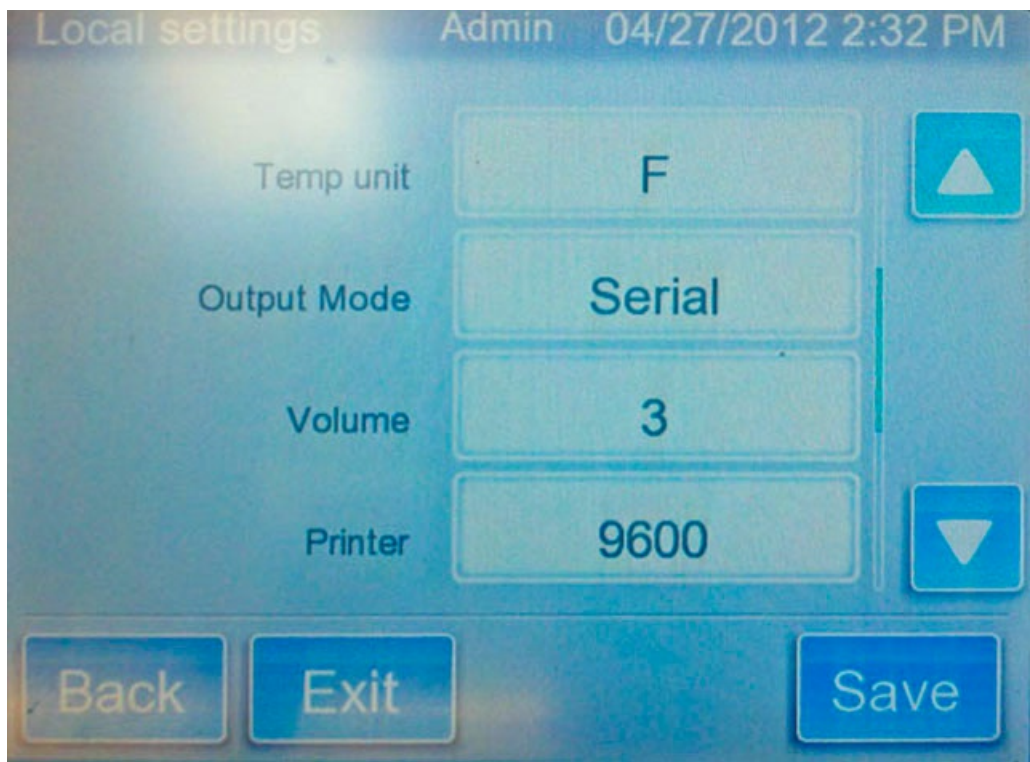
This will take you back to the General Settings Screen

Hit Local Settings on the screen.

Local Settings will come up and it will say Admin in the top bar.



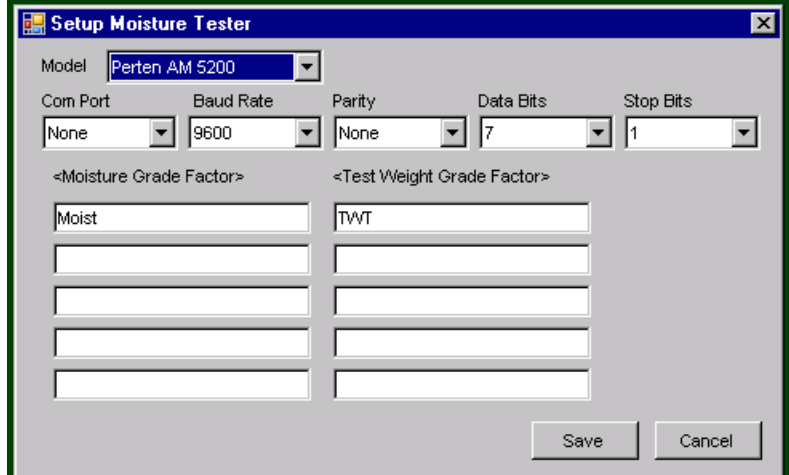
Tap the down arrow in the bottom right corner to go to the next screen.



Once in this screen make sure the Output Mode says Serial. If not tap in the box until it says Serial

The Printer option needs to match the baud rate in the moisture tester setting in Agvance. Hit save on the menu option and you are setup with the Perten AM 5200-A Moisture Tester.

Agvance Grain Scale Interface Setup for the Perten AM 5200-A Moisture Tester



Model – select the moisture tester model being used.

Com Port – this is the PC Com Port that the cable from the Perten AM 5200-A Moisture Tester is plugged into.

Baud Rate – the communications speed – must match the baud rate of the Perten AM 5200-A Moisture Tester.

Parity – used when communicating with the Perten AM 5200-A Moisture Tester – must match the setting of the Perten AM 5200-A Moisture Tester.

Data Bits – used when communicating with the Perten AM 5200-A Moisture Tester – must match the setting of the Perten AM 5200-A tester.

Stop Bits – used when communicating with the Perten AM 5200-A Moisture Tester – must match the setting of the Perten AM 5200-A Moisture Tester.

Moisture Grade Factor – double-click to select a moisture grade factor. The moisture grade factor selected will be used for all commodities.

Test Weight Grade Factor – double-click to select a test weight grade factor. The test weight grade factor selected will be used for all commodities.

Using the Perten AM 5200-A Moisture Tester on the Scale Ticket

1. Check the Enable Tester checkbox.

Note: The Enable Tester checkbox is not available if the Moisture Tester Setup is not complete.

2. When moisture results are returned on the Perten AM 5200-A Moisture Tester, the Capture Values button becomes enabled on the Scale Ticket.

3. Click on the Capture Values button to read the values into the grid.

