

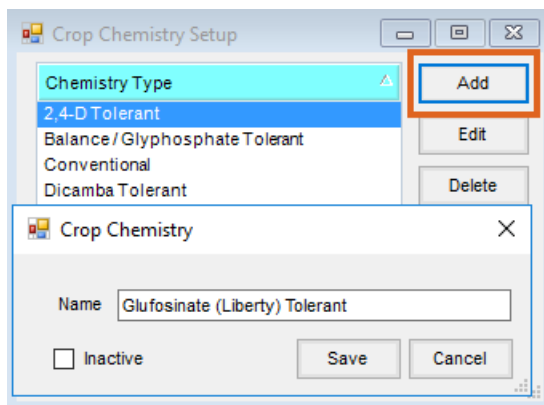
Using Crop Chemistry in Agvance

Last Modified on 08/02/2024 3:08 pm CDT

Crop Chemistries may be set up and used on Agvance Blend Tickets to denote the ticket is a certain chemistry, allowing the Blend Ticket to be assigned to the correct sprayers. When a *Crop Chemistry* is selected, it displays on the ticket to help avoid crop damage from incorrect application.

Setup

A *Crop Chemistry* type must be set up in the Agvance Blending or Planning module at *Setup / Crop Chemistry*. Choose **Add** to create a new Crop Chemistry. Enter the name to print on the Blend Ticket and Custom Application sheets to denote the Crop Chemistry.



To set the *Crop Chemistry* label when creating a Blend Ticket in Agvance Blending or Planning, select one of the predefined types from the drop-down.

The Agvance Blend Ticket and Custom Application sheet print the Crop Chemistry in black, bold type at the top of the documents.

SSI Farm Services - IL
 140 E. South Street
 Shelbyville, IL 62565 / (800) 752-7912

Blend Ticket 550
 Not Loaded, Custom Applied

Crop Chemistry: Glufosinate (Liberty) Tolerant

Barry Anderson
 2220 N 1000 Rd E
 Assumption, IL 62510
 217-226-2332 / 217-226-1256

Farm ID: AndFred
 Description: Fred Anderson Farm
 Field ID: AndBa / BA-01
 Description: Behind Fred Anderson's House
 County/Township: Shelby/Tower Hill
 Range/Section: 6E/10, 11

Ordered Date: 08/02/2024
 Time: 2:03 PM
 Loaded Date:
 Crop: Soybeans
 Acre: 97.98
 Placement: Sprayed
 Set: 00-Chemical
 Salesperson: Farbre

SSI Farm Services - IL
 140 E. South Street
 Shelbyville, IL 62565 / (800) 752-7912

Custom Application 550
 Not Loaded, Custom Applied

Crop Chemistry: Glufosinate (Liberty) Tolerant

Barry Anderson
 2220 N 1000 Rd E
 Assumption, IL 62510
 217-226-2332 / 217-226-1256

Farm ID: AndFred
 Description: Fred Anderson Farm
 Field ID: AndBa / BA-01
 Description: Behind Fred Anderson's House
 County/Township: Shelby/Tower Hill
 Range/Section: 6E/10, 11

Ordered Date: 08/02/2024
 Time: 2:03 PM
 Loaded Date:
 Crop: Soybeans
 Acre: 97.98
 Placement: Sprayed
 Ship Via:

Agronomy managers also have the option to require a *Crop Chemistry* on a ticket when using certain products.

Require Crop Chemistry

Select **Product Classifications** on the *Product* tab at *Hub / Setup / Company Preferences* and choose **Add**. Enter a *Name* for the Classification (ex. *Crop Chemistry Required*), and select the Products that should require a Crop Chemistry to be selected on the ticket.

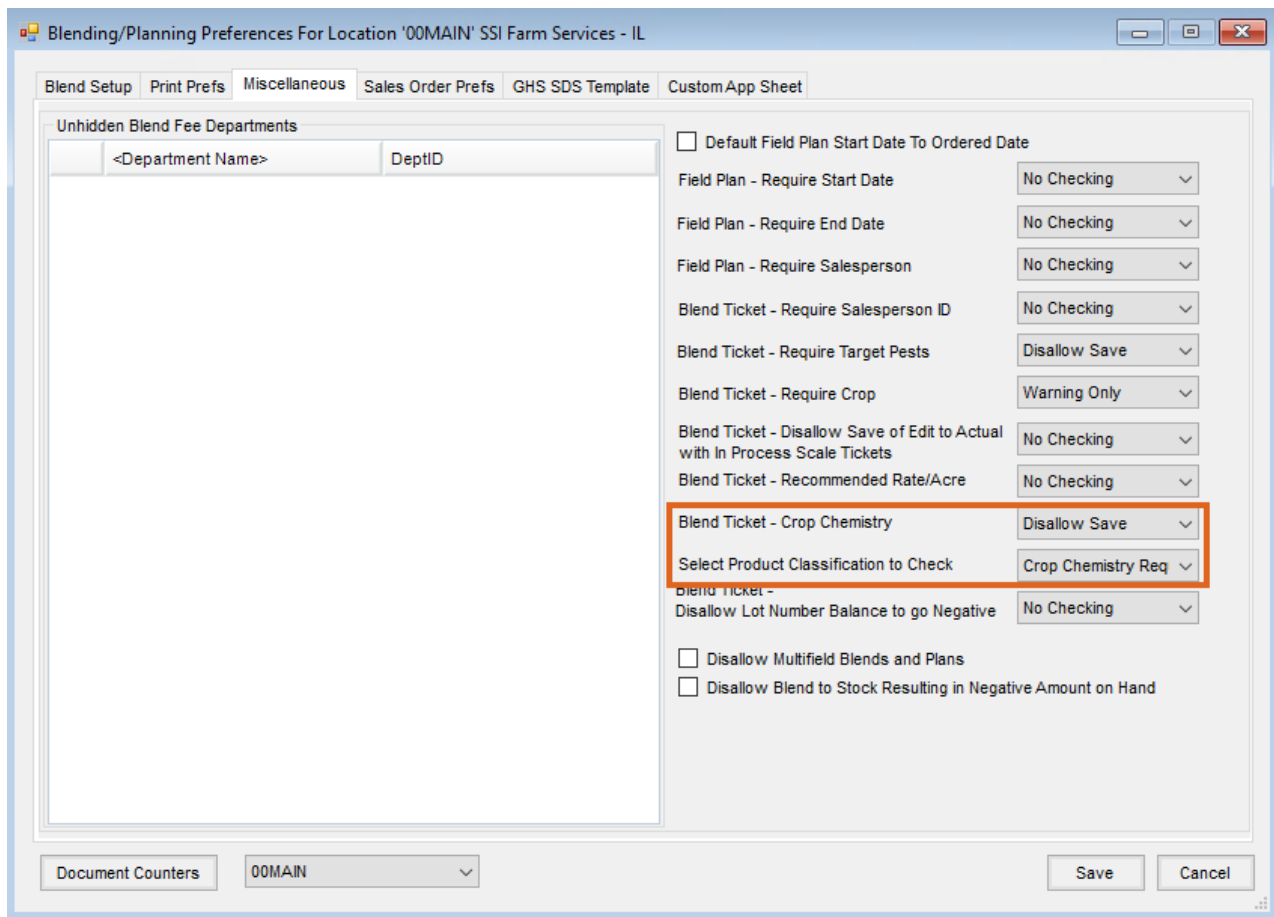
Note: Optionally, select entire Inventory Departments if desired.

	<Dept>	<Product Name>
1	Chem00	2,4-D Amine 4 1G
2	Chem00	2,4-D Lv6 2.5G
3	Chem00	Aatrex 4L
4	Chem00	Accent
5	Chem00	Agility SG (8 X 80oz)
6	Chem00	Atrazine 4L 2.5G
7	Chem00	Atrazine 4L 30G
8	Chem00	Atrazine 4L Blk
9	Chem00	Basis Gold
10	Chem00	Bicep II Magnum

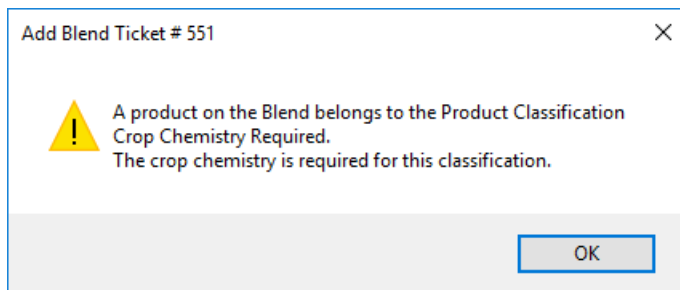
After the Classification is set up, navigate to the Blending or Planning module. On the *Miscellaneous* tab at *Setup / Location Preferences*, set the *Blend Ticket - Crop Chemistry* preference to *Disallow Save*.

Note: The *Blend-Ticket - Crop Chemistry* preference may be set to *No Checking*, *Warning Only*, or *Disallow Save*.

From the *Select Product Classification to Check* drop-down, choose the Product Classification just set up.



With the preference set to *Disallow Save*, when one of the Products contained in the Product Classification is used on a Blend Ticket, a *Crop Chemistry* must be selected before the Blend Ticket may be saved. If one is not selected, a warning message displays.



Agvance Dispatch

The *Crop Chemistry* label is also available as a filtering option in the Agvance Dispatch module, allowing the dispatcher to filter for a certain Crop Chemistry and assign those jobs to their applicators.

Column Name	Column Value	
Location		▼
Crop		▼
Ticket Type		▼
Ship Via	Select	
Crop Chemistry	Select	
J.O.#		▼
Ticket #		▼

Select the *Crop Chemistry* by which to filter.

	Select	Crop Chemistry
1	<input type="checkbox"/>	
2	<input type="checkbox"/>	2,4-D Tolerant
3	<input type="checkbox"/>	Balance / Glyphosphate Tolerant
4	<input type="checkbox"/>	Conventional
5	<input type="checkbox"/>	Dicamba Tolerant
6	<input checked="" type="checkbox"/>	Glufosinate (Liberty) Tolerant
7	<input type="checkbox"/>	Non GMO
8	<input type="checkbox"/>	Roundup Tolerant

Cancel Apply

Select the **Apply** button on the *Crop Chemistry Filter* window and then the **Apply** button on the *Agronomy Work Orders* window to filter for the selected Crop Chemistry.