

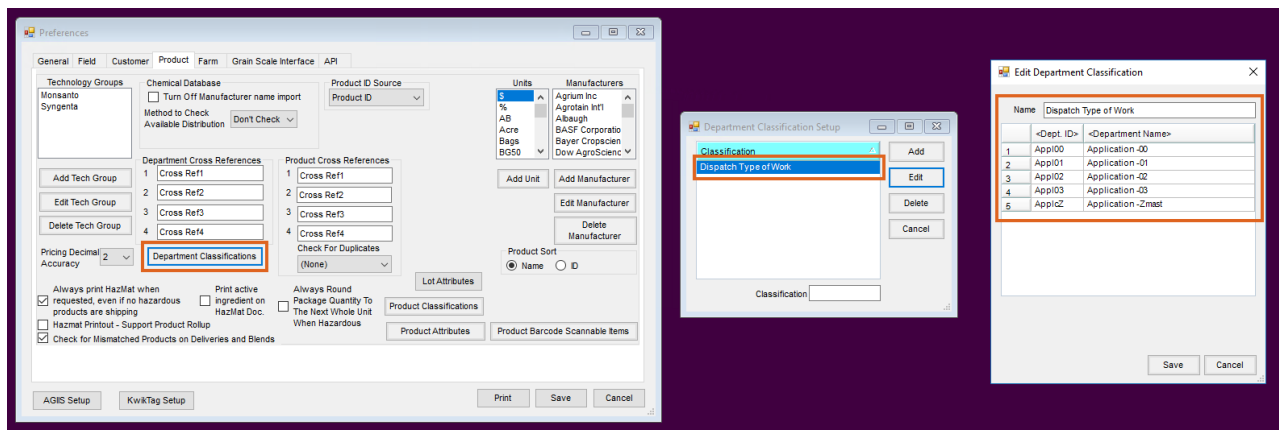
Type of Work Classification Setup

Last Modified on 01/22/2026 10:47 am CST

Setup

Type of Work Classifications are Inventory Departments included in a Classification, such as *Dispatch Type of Work*. To set up this Classification, navigate to the *Product* tab at *Hub / Setup / Company Preferences* and select **Department Classifications**.

If a Dispatch Type of Work Classification does not exist, select **Add**, then enter the *Name* of the Department Classification. Double-click the *Dept ID* or *Department Name* column heading to select the necessary service fee Departments.



After the setup is complete, select **Save**.

Windows Agvance

Note: For SKY Dispatch, see [here](#).

Open the Dispatch module. In the *Agronomy Work Orders* window, select the **Setup** button. On the *General* tab of the *Multi API Work Order Setup* window, select *Dispatch Type of Work* from the *Type of Work Classification* drop-down.

Multi API Work Order Setup

General

Mobile Job Manager

Raven

Type of Work Classification

Dispatch Type of Wc

Priority Names

Unknown

Unknown

Priority 1

1

Priority 2

2

Priority 3

3

Priority 4

4

Priority 5

5

Sync Devices Timer

Sync Devices

Interval

0

(seconds)

Contact Type to notify with email

Send Email

Contact Type

Decision Maker

All

Display Email Notifications

Mobile Job Manager Options

Update Inventory

Device

	<ID>	Salesperson	Scheduling Manager	Limit to Ship Via	Allow Sync	User Email
1	1RE					
2	2KA					

The *Agronomy Work Orders* grid is then filtered to display only the Products residing in the Inventory Departments included in the *Dispatch Type of Work Classification* currently included with the displayed tickets in the grid.