

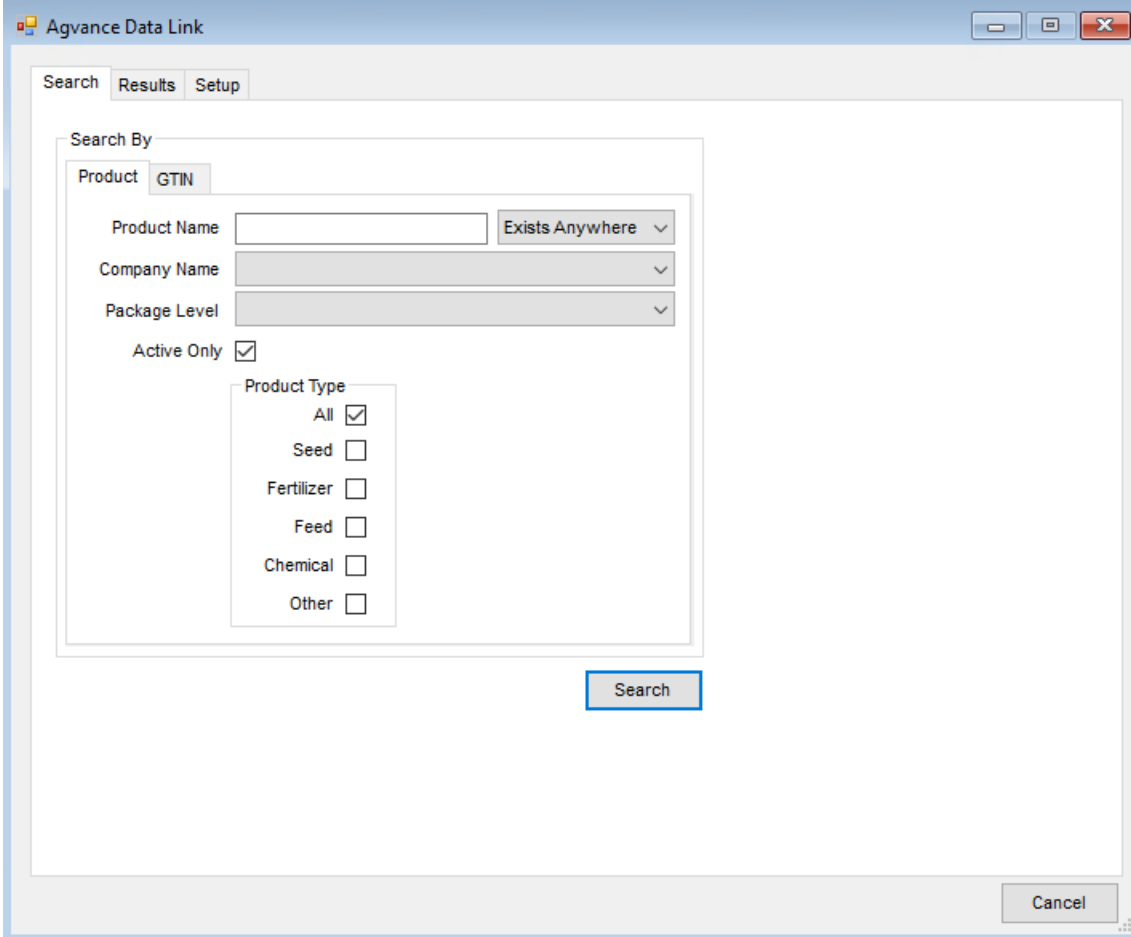
# Agvance Data Link

Last Modified on 09/13/2024 11:51 am CDT

The Agvance Data Link import, found at *Hub / Transfers / Import / Agvance Data Link*, provides a database of product information that may be used to populate the required data fields, other data fields, and update some existing data fields in Agvance. This data is sourced from an industry-wide database containing thousands of products uploaded by over 50 manufacturers.

## Search

Optionally search by *Product* information or by using the *GTIN*.



The screenshot shows a software window titled "Agvance Data Link" with a search interface. The window has a title bar with standard minimize, maximize, and close buttons. Below the title bar, there are three tabs: "Search", "Results", and "Setup", with "Search" being the active tab. The main content area is titled "Search By" and contains two sub-sections: "Product" and "GTIN". The "Product" sub-section is currently selected and contains the following fields: a text input for "Product Name" with a dropdown menu set to "Exists Anywhere", a dropdown for "Company Name", and another dropdown for "Package Level". Below these is a checkbox for "Active Only" which is checked. Underneath is a "Product Type" section with a list of options: "All" (checked), "Seed", "Fertilizer", "Feed", "Chemical", and "Other", each with an unchecked checkbox. A "Search" button is located at the bottom right of the search area. At the very bottom right of the window, there is a "Cancel" button.

## Product

- **Product Name** – Enter the *Product Name*, then choose *Exists Anywhere* or *Starts With*.
- **Company Name** – Choose from a hard-coded list of companies to search.
- **Package Level** – Select from a hard-coded list of package levels.

- **Active Only** – Check the box to search only for active products.
- **Product Type** – Check the box or boxes for the type of product to search.

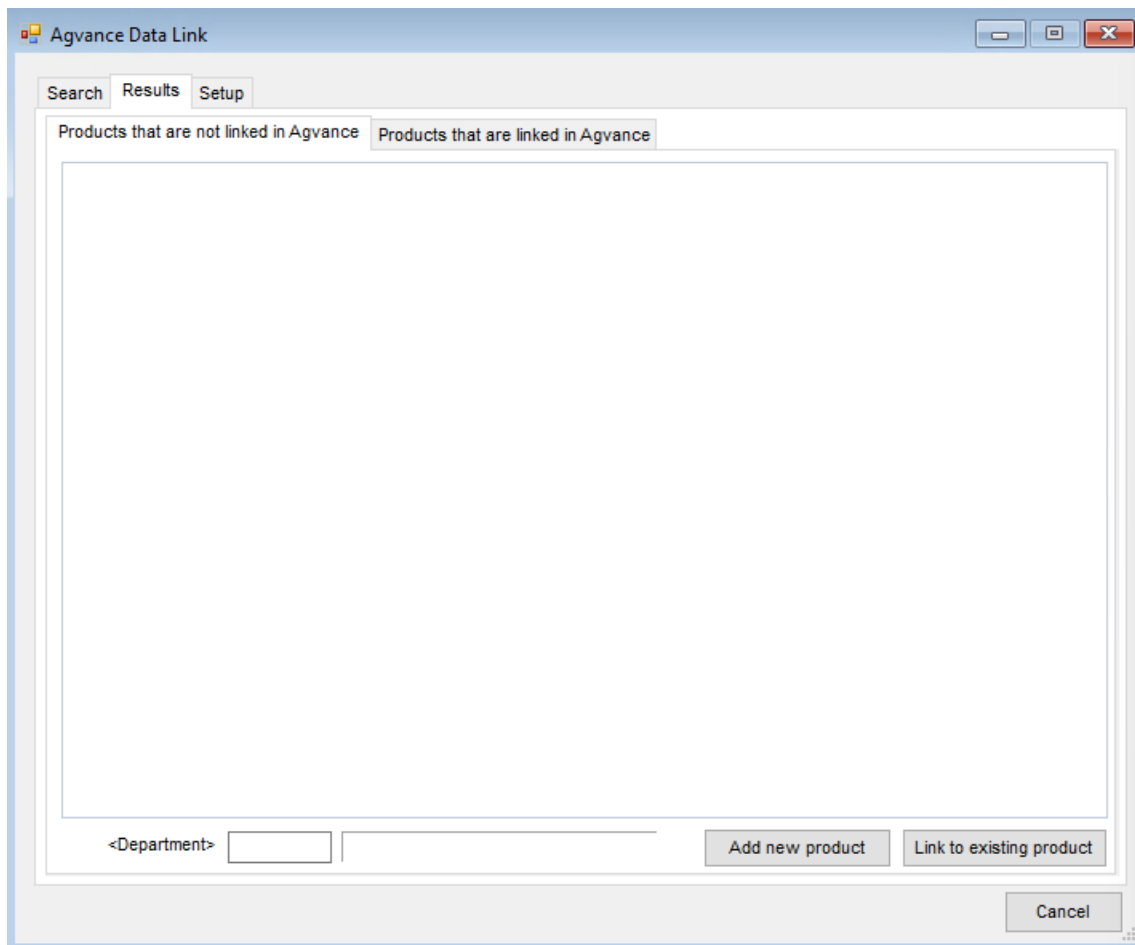
## GTIN

A product can also be searched by entering the Global Trade Identification Number.

## Results

### Products Not Linked in Agvance

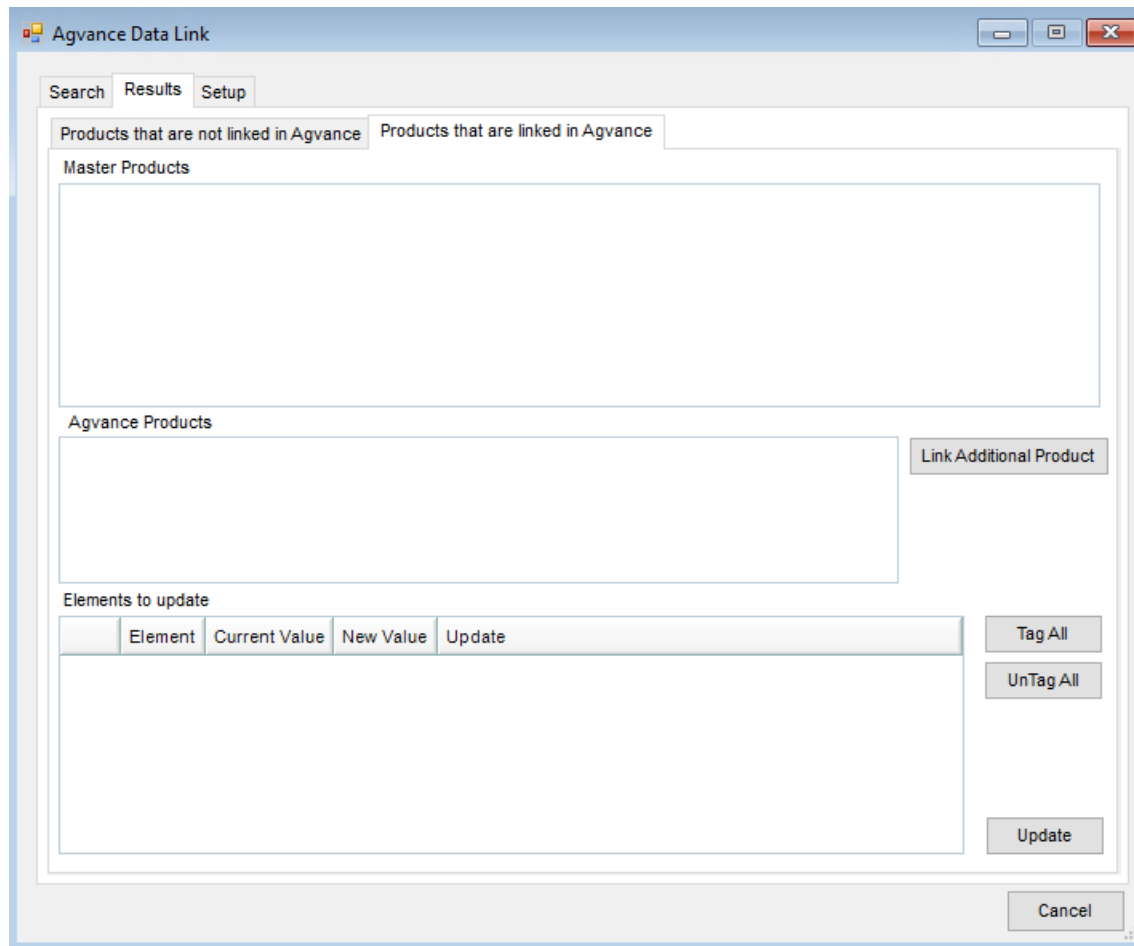
Results of the search display in this window for products that are not currently linked to Agvance Products.



- **Department** – Double-click and select the Inventory Department where the product will be added.
- **Add new product** – This adds the selected product into the Inventory Department specified in the Agvance data.
- **Link to existing product** – This links the new product to an existing product in the Agvance data.

## Products Linked in Agvance

Results of the search display Products that already exist in the Agvance data in this window.



- **Master Products** – The products from the Master Database display in this window.
- **Agvance Products** – The products displayed in this window are currently in the Agvance data.
- **Link Additional Product** – This links additional products in the Agvance data to the Master product.
- **Elements to update** – Choose which elements to update by checking the boxes in the *Update* column.
- **Update** – This updates the selected elements of the current products in Agvance from the Master products information.

## Setup

The screenshot shows a software window titled "Agvance Data Link" with three tabs: "Search", "Results", and "Setup". The "Setup" tab is active. It contains three text input fields with labels to their left: "<SST ID Attribute>", "<Reporting ID>", and "<Reporting UOM>". The first field is empty, the second contains "RepID", and the third contains "UOM". Below the fields is a "Save" button. At the bottom right of the window is a "Cancel" button.

- **SST ID Attribute/Reporting ID/Reporting UOM** – Double-click to choose the corresponding attribute that was previously setup.