

# Product Setup in the Hub

Last Modified on 03/18/2025 3:36 pm CDT

Inventory Products and services (such as custom application) are entered in the Product file. In order to group them logically, Products are stored in Departments. Examples of departments are Dry Fertilizer, Liquid Fertilizer, Chemicals, Application, Feed, etc. The Hub has several common departments pre-defined. Add to this list of departments at *Setup / Inventory Departments*.

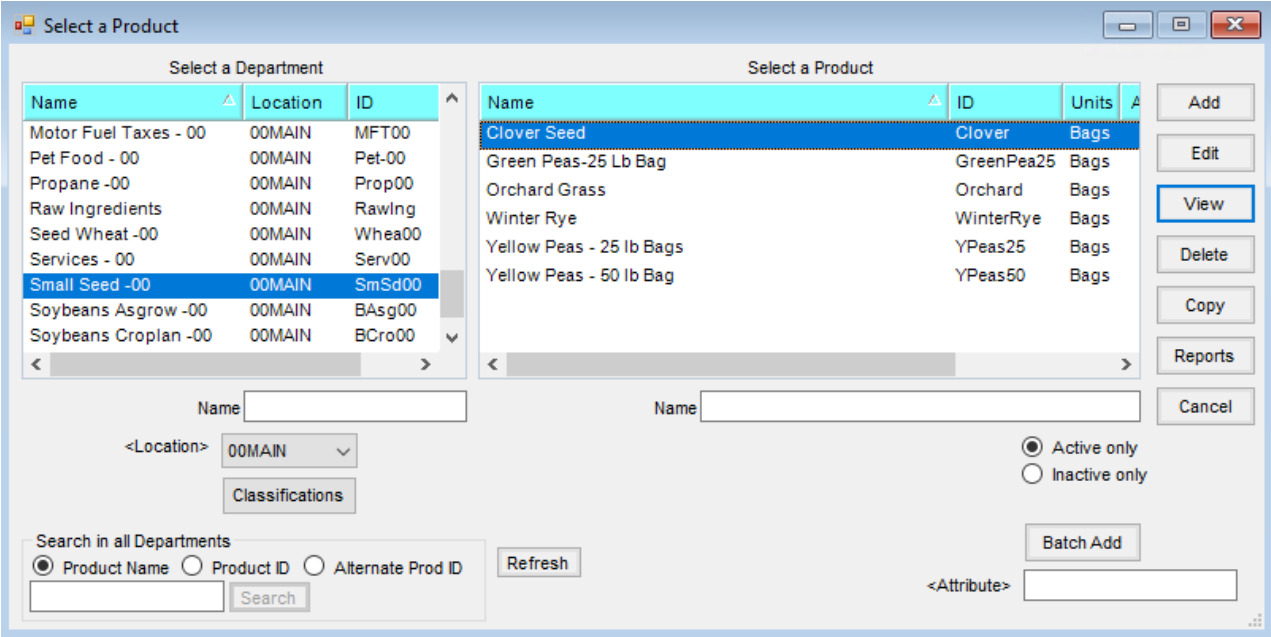
To access an inventory item, go to *File / Open / Products*. The *Select a Product* window appears. From there, select first the Department and then the Product within that department. Like the Field file, the Product file has several tabs to hold related Product information.

See [here](#) for information on setting up MULTIPLE Products at once for use in Blending and Planning.

See [here](#) for information on setting up SINGLE Products at once for use in Blending and Planning.

## Managing Products

Agvance has different options for managing Products in a multi-site environment. These different options can help make mass changes to Products, which reduces mistakes and saves time.



- **Copy** – Select this to choose a specific Product to copy to specific Departments.
- **Batch Add** – This option copies the selected Product information for a quick add. A new Product ID and name can then be edited, leaving other information intact. Additionally, there is an *Add this product to all departments with matching category* checkbox which adds the Product to all Departments with the same Category.

## Product Synchronization

Product Synchronization may be used to mass update specific Products selected. The use of a master Product list can update all Products at the moment Products are added or edited. This can save time by pushing out changes made to a single Product, instead of having to make the same edits to multiple Products in different Locations.

## Profile

The *Profile* tab holds basic data such as *Manufacturer* and *Inventory Units* (storage in Lbs, Ton, Gal, Pts, etc.). Type in or cross-reference to a chemical database the information shown on the *Profile* tab.

Product Information for Chemicals -00 / Liberty SI280 2X2.5Gal Cas Us

Profile Safety Blend Setup Pricing Tier II Seed / Lots Mapping Recs

AGIS <Department> Chem00 ? Product ID 7261 Manufacturer Part #

Product Name Liberty SI280 2X2.5Gal Cas Us Alternate Product ID

Technology Group (None) GTIN 00785740173589 SSI Global ID 55107

Manufacturer Bayer Cropsience

Bar Code ID

Re-order Level 0

Amount on Hand 55,000

Inventory Units Gal

Unit Weight 9.5000000 Lbs/Gal

Package Units Gal

Package Size 1.0000000 Gal/Gal

<Commodity Ref>

EDI Reportable

Inactive

Consignment

On Hold

Package Size Is Bulk

Shipping Manifest Pkg Qty is Always 1

Storage Codes

<Storage Code>

Classifications

Attributes

Substitutions

Bar Codes

Product Cross References

Meppel ID

MepInvCode

MeppAgency

Gasboy

Threshold Ratio Wizard Manufactured Formula Save Cancel

- **Department** – The Department selected on the previous screen defaults. Double-click in the *Department* field to list the available Departments from which to choose. For more about the selected department, select **More Info**.
- **Product ID** – Use up to 10 characters to identify this Product. This ID must be unique within this Department.
- **Product Name** – This is the description that appears on the Customer’s documents such as Maps, Plans, Blends, or Invoices. Use up to 50 characters to describe this Product.

**Note:** The *Product Name* and/or *Product ID* may be edited at any time. The changes filter through the database so the history follows the changes and maintains the integrity of the data. There are a couple of things to note if changes are made:

- When running reports across years (i.e. including additional datasets), if the *Product Names* and *Product IDs* do not match in both datasets, it may result in the Product showing more than once on the report - once for the old name and ID and once for the new name and ID.

- When running reports sorted by name, the Product may show up more than once on a report, as it will show transactions under the old name and transactions under the new name. This also happens on reports if a *Product Name* is manually changed on a transaction.
- **Technology Group** – When applicable, select a *Technology Group* from the drop-down list for the Product. Technology Groups are set up at *Setup / Company Preferences* on the *Product* tab. For more on the setup of Technology Groups, see [Technology License Setup](#).
- **Manufacturer** – Select the *Manufacturer* from those provided if applicable. Add to this list at *Setup / Company Preferences* on the *Product* tab. If using a DOT regulatory interface chemical database, the Manufacturer is added automatically when linking the Product to the database ID (from the *Safety* tab).
- **Bar Code ID** – This area optionally holds the Universal Product Code (UPC).
- **Re-order Level** – This optional input allows a re-order level to be established for this Product. If utilized, Products falling below this level are indicated on the Re-Order Report found in Inventory Status reports. This is an optional, manually set quantity. The program does no calculation to determine the number entered here.
- **Amount on Hand** – This holds the current amount on hand in Inventory Units. This input is used by the Agvance Accounting module and is updated automatically when Product movement (Delivery Ticket, Invoice, or Purchase Receipt/Purchase Invoice) occurs. It is not needed for Agvance Mapping, Planning, or Blending.
- **Inventory Units** – Not to be confused with Billing Units, the Inventory Unit is the storage unit. The Product may be stored in one unit and billed in another. The *Billing, Rating, and Blending Units* are set up on other tabs.
- **Unit Weight** – Enter the weight of one Inventory Unit of this Product in *Lbs*. For example, if the Inventory Unit is *Lbs*, the *Weight* is 1. If the Inventory Unit is *Tons*, the *Weight* is 2000. For liquid, determine the weight/unit.
- **Package Units** – Enter the unit for the Product package. This is commonly something such as *Case, Bags, Jugs*, etc. but could also be *Lbs* or *Gal* for bulk Products.
- **Package Size** – Used primarily for chemicals and bagged fertilizer, the size, along with the Package Units, prints on Delivery Tickets and Blend Tickets to help when loading the Product. *Package Size* is how many Inventory Units are in one Package Unit. This is important for the Tonnage Tax report in Agvance Accounting and hazardous material shipping papers, which may be printed from several of the Agvance modules.
- **Commodity Ref** – Double-click to select a Commodity if this Product should be included in Grain posting.
- **EDI Reportable** – Select this option if sales of this item are being tracked via an EDI system in order to export to any chemical company (or Harvest Partner, Meppel, etc.).
- **Inactive** – Select this option when the Product is no longer active. This prevents further transactions from being created using this Product. A Product must have a zero *Amount on Hand* and company-owned inventory quantity to be marked *Inactive*.
- **Consignment** – Choose this option if this Product is a consignment Product. Items marked consignment may optionally be included on Inventory Statement reports.
- **On Hold** – Choose this option to keep unauthorized purchases of this Product from being saved.

- **Package Size Is Bulk** – Select this option if the Product is shipped in a bulk mode. This preference is used for placard calculations on the hazmat printouts. If Agvance is set up to interface with Agrian, this preference will be checked automatically depending on the Agrian Product and Package Size to which the Agvance Product is linked.
- **Shipping Manifest Pkg Qty is Always 1** – If selected, the Product will always print a 1 for the package value on shipping papers. For example, if there is a 2000 gallon tank at the mix shed and 139 gallons of Product are pumped into a tote or tank on a truck, the shipping paper would show 1 even though the *Package Unit* on the Product is *Gallons*. A quantity of 1 suffices for a single tank or portion of a single tank.
- **Manufacturer Part #** – Optionally enter a part number here which is then available to display at the *Select Products* window and prints on a Purchase Order.
- **Alternate Product ID** – If *Product ID Source* at *Hub / Setup / Company Preferences* on the *Product* tab is set to *Alternate Product ID*, then information entered here prints on select reports and is displayed at the *Select Products* window.
- **GTIN** – This is the Global Trade Identification Number used by Supplier E-Link.
- **SSI Global ID** – This number automatically populates when the Agvance Data Link database is accessed.
- **Edit GTIN** – If the number displaying in the *GTIN* area is incorrect, this option allows the number to be edited.
- **Clear SSI Global ID** – Select this option to clear the number from the *SSI Global ID* above.
- **Storage Codes** – Double-click to add a row and enter a Storage Code up to 30 characters. The codes entered print on select documents. Storage Codes may be added, edited, or deleted at any time.
- **Classifications** – Choose to select a Classification or Classifications for the Product. Classifications are set up at *Setup / Company Preferences* on the *Product* tab.
- **Attributes** – Choose to select the Attributes for this Product. Attributes are set up at *Setup / Company Preferences* on the *Product* tab.
- **Substitutions** – Substitutions are intended for use when a Manufactured Formula is set up on a Product with an ingredient in the formula that may be substituted for a Product the customer has in Grain Bank. If there is not enough quantity in Grain Bank to cover, Agvance looks to use available Bookings. Select **Manuf Billing** to trigger the substitution process. If not using Grain Bank and **Manuf Billing** is selected, a positive and negative line item for the raw ingredient in the Manufactured Formula will be added allowing those to be booked as needed. Agvance will not attempt to substitute anything.  
**Note:** The *Allow Manufactured Inventory Detailed Billing* preference must be turned on at *Accounting / Setup / Locations Preferences* for Substitutions to be allowed and for the **Manuf Billing** button to be available on the *Invoice* window.
- **Bar Codes** – For Products with multiple bar codes, the bar codes may be entered here. To utilize these multiple bar codes, go to *Setup / Company Preferences*, and select **Product Barcode Scannable Items** on the *Products* tab. In the *Barcode Lookup Order* grid, select *{Product}{Additional Barcodes}*.
- **Product Cross References** – There are four optional inputs to help identify this Product to other computer

systems or numbering schemes. The headings for these miscellaneous inputs are set at *Setup / Company Preferences* on the *Product* tab.

## Safety

The screenshot shows the 'Safety' tab of a software interface for chemical products. The window title is 'Product Information for Chemicals -00 / Liberty SI280 2X2.5Gal Cas Us'. The 'Safety' tab is active, displaying various input fields and checkboxes. The fields include: EPA # (264-829), PCP #, Active Ingredient (Glufosinate-ammonium), Threshold (0), Packing Group, Hazard Class (None), Placard, UN/NA ID, Chemical Database (Agrian, ID 10748), DOT Config (2,2.5,GA), Size ID (2240155), and Last Updated (05/23/2024). There are checkboxes for 'Federally Restricted', 'Potentially Hazardous', 'Warning' (Posted, Oral), and 'GHS Required'. A 'Prop 65 Details' button is also visible. A text area for 'Safety Comments' contains three numbered lines. A 'DOT Warning Note' field is at the bottom. Navigation buttons like 'View SDS', 'View Label', 'View WPS', and 'Refresh' are at the bottom left. A 'Save' and 'Cancel' button are at the bottom right.

- **EPA#** – Enter the unique EPA number if applicable. If using a DOT regulatory interface program, this input is completed when linked to the Product. Blend Tickets, Delivery Tickets, and Invoices (optionally) print EPA numbers if they exist on this screen for the Products involved.
- **PCP#** – Record the PCP Registration # for Canadian chemical Products. This can be imported from Agrian or entered manually. If a number is populated here, the PCP Registration # will print on hazmat documents for Delivery Tickets and Blend Tickets and Custom App Sheets for Blend Tickets. If imported from Agrian and the file contains a *PMRA Registration Type*, that number will populate in this field.
- **Federally Restricted and Potentially Hazardous** – Using these options, indicate the rating if applicable. If using a DOT regulatory interface program, this input is completed when linked to the Product.
- **Warning** – Indicate if *Posted* or *Oral* warnings are required.
- **Prop 65 Details** – For transactions delivered in California, Prop 65 warnings print on the documents. This option controls the Prop 65 warnings entered at *Setup / Company Preferences* on the *General* tab. Using Agrian for chemical compliance automatically updates these options as needed.
  - **Known to cause cancer** – If the Product is known to cause cancer, select this option and then list the *Cancer-causing chemicals* in the field below.
  - **Known to cause birth defects or other reproductive harm** – For Products known to cause birth defects

or other reproductive harm, select this option and enter the *Birth defect or other reproductive harm causing chemicals* in the area below.

- **GHS Required** – Select this option if GHS SDS documentation is required for this Product.
- **State Restricted** – This opens the *Restricted Use State Setup* window listing states. Choose this option for each state where this Product is restricted, which requires a valid permit to be used.
- **Re-Entry Interval (Hours)** – Indicate the number of hours after application re-entry is permitted.
- **Shipping Name** – When using the Agrian interface, this information is received from Agrian.
- **Nat. Motor Carrier Class.** – This is an industry standard for comparison of Commodity transportability. It may be manually entered and if so, prints on the HazMat document for Products not set as *Potentially Hazardous*.
- **Safety Comments and DOT Warning Note** – Information may be manually added at this screen for informational purposes only. In order to get accurate hazardous material shipping sheets to print automatically, subscribe to a DOT regulatory interface database. For more information on this interface, please contact SSI.
- **Chemical Database** – This section is populated by the Agrian Interface, which may optionally be used.

## Blend Setup

This window must be filled out to use the Product in the Agvance Planning or Blending modules. It defines several units of measure, critical ratios, and the Product's Nutrient Contribution. If those modules are not purchased or the Product will never be used in them, it does not need to be filled out.

Product Information for Chemicals -00 / Liberty SI280 2X2.5Gal Cas Us

Profile Safety **Blend Setup** Pricing Tier II Seed / Lots Mapping Recs

Consistency  
 Solid (dry)  Liquid

Rate to Blending Ratio  Specific Gravity

Product Density  Lbs/Gal  
 Blend to Inventory Ratio

Rate/Acre Units  % Solid Material   
 Blending Units  % Water   
 Recommended Rate/Acre  % Clay   
 Blender Factor

Nutrient Contributor Information

N  P  K  S  UD  Ca   
 Mg  Zn  Fe  Mn  Cu  B

	Fertilizer Ingredients	N	P	K	S	UD	Ca	Mg	Zn	Fe	Mn	Cu	B	UD2	UD3
1		<input type="checkbox"/>	<input type="checkbox"/>	<input type="checkbox"/>	<input type="checkbox"/>	<input type="checkbox"/>	<input type="checkbox"/>	<input type="checkbox"/>	<input type="checkbox"/>	<input type="checkbox"/>	<input type="checkbox"/>	<input type="checkbox"/>	<input type="checkbox"/>	<input type="checkbox"/>	<input type="checkbox"/>
2		<input type="checkbox"/>	<input type="checkbox"/>	<input type="checkbox"/>	<input type="checkbox"/>	<input type="checkbox"/>	<input type="checkbox"/>	<input type="checkbox"/>	<input type="checkbox"/>	<input type="checkbox"/>	<input type="checkbox"/>	<input type="checkbox"/>	<input type="checkbox"/>	<input type="checkbox"/>	<input type="checkbox"/>
3		<input type="checkbox"/>	<input type="checkbox"/>	<input type="checkbox"/>	<input type="checkbox"/>	<input type="checkbox"/>	<input type="checkbox"/>	<input type="checkbox"/>	<input type="checkbox"/>	<input type="checkbox"/>	<input type="checkbox"/>	<input type="checkbox"/>	<input type="checkbox"/>	<input type="checkbox"/>	<input type="checkbox"/>

- **Solid (Dry)/Liquid** – Indicate if this Product is a dry or liquid item. If not applicable (services, parts, etc.), then set to *Solid*.
- **Product Density** – Enter the density in pounds/cubic foot.
- **Rate/Acre Units** – Select the rating units. Add to the list of available units at *Setup / Company Preferences* on the *Product* tab.
- **Blending Units** – Indicate the Blending Units.
- **Recommended Rate/Acre** – Enter the *Recommended Rate/Acre* in rating units if applicable. The Product defaults at this rate when added to a Field Plan or Blend Ticket.
- **Rate to Blending Ratio** – Enter the number of rating units in one Blending Unit. This ratio may be automatically calculated by selecting **Ratio Wizard** at the bottom of the form.
- **Blend to Inventory Ratio** – Enter the number of Blending Units in one Inventory Unit. This ratio may be calculated by selecting **Ratio Wizard**.
- **% Solid Material** – Indicate the percent of solid material in this Product.
- **% Water** – Indicate the percent of water in this Product. Only use this when using the percent water when formulating blends. If not using the percent water when formulating, the only Product that should have this number filled out is the actual Water Product.
- **% Clay** – Indicate the percent of clay in this Product.
- **Blender Factor** – This is used only for automated blenders. Refer to the technical information on automated blenders in the *Blending* section for details.
- **Specific Gravity** – This is used to correctly calculate the final weight and volume of a blend when using a dry Product in a liquid blend.
- **Nutrient Contributor Information** – This is enabled only if the Inventory Department is set up as a *Nutrient Contributor*. If the *Rate/Acre Units* is *Lbs*, then this number is the percentage of 100 pounds of material. If the *Rate/Acre Units* is *Gal*, then the contribution is a percentage of 100 gallons of material.
- **Details** – This option accesses an area to add additional information pertaining to each nutrient. This information prints on the state fertilizer tag.
- **Fertilizer Ingredients** – This grid allows ingredients to be input for fertilizer products in states where specialized tags are required (GA, FL, TX).

## Pricing

The *Pricing* tab holds costs, List price, and Pricing Level information. The *Pricing* screen should be filled out if using the Agvance Planning, Blending, or Accounting modules.



Product Information for Chemicals -00 / Liberty SI280 2X2.5Gal Cas Us

Profile Safety Blend Setup Pricing Tier II Seed / Lots Mapping Recs

Billing Units Gal

Billing Divisor 1.0000000

Average Cost 72.233

Last Cost 72.233

Replacement Cost 72.233

Profit Margin

Estimated Average Cost 72.233

Replacement 2 Cost 0.000

Replacement 3 Cost 0.000

Replacement 4 Cost 0.000

Audit Costs

Audit Prices

When using formulas, carefully select the Source. The Source must not be the same as the Pricing Level being updated.

Show Formulas

Pricing Levels		
	Level	Price
	List	86.25
1	December	85.00
2	January	83.75
3	February	82.50

- Billing Units** – Indicate this Product’s pricing units. Add to the list of available unit types at *Setup / Company Preferences* on the *Product* tab if necessary.
 

**Note:** The cost amount reflects the Billing Unit.
- Billing Divisor** – Select one of the existing Billing Divisors or type in a number. This indicates the number to divide the number of *Inventory Units* by to get the *Billing Units*. For example, if the Product is inventoried (stored) in *Lbs* and billed (priced) by the *Ton*, the divisor would be 2000.
- Average Cost** – When using the Agvance Accounting program, this number is automatically updated when a Purchase Invoice is created for that inventory item. It is a weighted average based on the amount of Product on hand before the purchase, the previous Average Cost, the amount just purchased, and the new cost figure.
 

**Note:** All cost figures display at 3-decimal accuracy.
- Last Cost** – If using the Agvance Accounting program, this number is automatically updated when a Purchase Invoice is created for that inventory item. The new cost of the item simply replaces the old.
- Replacement Cost** – This figure is not automatically updated by any accounting transaction. Optionally manually enter a cost figure here, feathering in overhead costs or other hidden cost factors and use the replacement cost as a basis for the markup for Product pricing.
- Profit Margin** – For departments with *Profit Margin Department* checked at the *G/L Posting* tab found at *Accounting / Setup / Inventory Departments*, enter the desired margin here. The cost saved on an Invoice for this Product is calculated based on the selling price and this Profit Margin. This function is designed for non-inventoried departments where generic items are used to invoice Product where predictable margins are expected.
- Estimated Average Cost** – This optional field is updated upon saving a Purchase Receipt for departments set



to *Compute Invoice Cost by Estimated Average*. The averaging calculation rules mimic the Average Cost calculations except they use the total Amount on Hand rather than company-owned quantity. The purpose of this cost is to save a more accurate cost for Products that are either fast-moving or have prices that are fairly volatile.

- **Replacement 2 Cost - Replacement 4 Cost** – This figure is not automatically updated by any accounting transaction. A manual cost figure may optionally be entered here, feathering in overhead costs or other hidden cost factors and use the Replacement Cost as a basis for the markup for Product pricing.
- **Audit Costs** – This opens the *Cost History* window showing most activities which caused a change to the cost of the Product. This can be very helpful when trying to find how a particular cost was set on an item.

	Date	Time	User	Comment	Before	After	Quantity
1	12/21/2023	08:54:18	MJR	Average Cost/Purchase Invoice/Trueval...	0.000	10.000	0.000

- **Audit Prices** – Similar to **Audit Costs**, this option shows a list of transactions entered where the List or any Price Level's prices were overridden.
- **Pricing Levels** – Use any or all of the twenty-four auxiliary Price Levels. A Customer may be set to default to any of these Price Levels on the Customer *Profile* window. Customize the labels on these twenty-four optional Price Levels at *Setup / Inventory Departments* on the *Price Levels* tab.  
**Note:** The price amounts reflect the Billing Unit.
- **Show Formulas** – Select this option to add, view, or edit any formulas saved to aid in setting and/or updating level prices. When setting up formulas for several related Products, it may be more convenient to use the utility found at *Hub / Utilities / Edit Product Pricing*.

## Tier II

The *Tier II* tab holds information needed to fill out the Maximum / Average Daily Inventory report that must be filed annually. It also stores information about spill quantities before they need to be reported. All information on this tab, except Storage Codes, may be imported from a DOT regulatory interface if the linked Product contains this information.

Product Information for Chemicals -00 / Liberty SI280 2X2.5Gal Cas Us

Profile Safety Blend Setup Pricing Tier II Seed / Lots Mapping Recs

Chemical Description  
 Pure  Mix  Solid  Liquid  Gas  Trade Secret  
 EHS

Physical and Health Hazards

	Hazard
1	<input type="checkbox"/> Flammable (gases, aerosols, liquids, or solids)
2	<input type="checkbox"/> Gas under pressure (compressed gas)
3	<input type="checkbox"/> Explosive
4	<input type="checkbox"/> Self-heating

Storage Codes  
 <Cont Type> <Pressure> <Temp> Locations  Optional

CAS Numbers

	Chemical Name	CAS #	Minimum Report Qty	% Active	EHS	Threshold Plan Qty	Threshold Report Qty
1	Sodium Alkyl Ether Su...	68585...	0	31.6	<input type="checkbox"/>	0	0
2	Glufosinate-ammonium	77182...	0	24.5	<input type="checkbox"/>	0	0
3	Alkyl Polyglycoside	68515...	0	9.8	<input type="checkbox"/>	0	0
4	Dipropylene Glycol	25265...	0	8.6	<input type="checkbox"/>	0	0
5	Propylene Glycol Met...	107-9...	0	1	<input type="checkbox"/>	0	0
6					<input type="checkbox"/>		

Threshold Ratio Wizard Manufactured Formula Save Cancel

- **Chemical Description** – These options are used to select the type of Product. Examples are a *Pure* or *Mixture* and in what state the Product is stored; *Solid*, *Liquid*, or *Gas*. The *EHS Name* does not need to be filled out as the *Chemical Name* is used when it is checked as an EHS product in the *CAS Numbers* grid.
- **Health Hazards** – Select the appropriate health hazards this Product poses.
- **Storage Codes** – Indicate the *Container Type*, *Pressure* and *Temperature* in which the Product is stored. Double-clicking in each column displays a list from which these codes may be selected. Location information, as to where the Product is stored, may also be entered in this section.
- **CAS Numbers** – This section contains the chemical breakdown of the Product. This information can usually be found on product labels or on the Product's SDS. Enter the *Chemical Name* in the column provided. Enter the chemical's CAS number in the *CAS #* column without dashes. The reportable quantity for a spill is entered in the next column, then the active percentage of the chemical in the next column. If an exact quantity is not known, a zero may be entered in this field. An example of this is an inert ingredient that is being broken out separately. Select the *EHS* option if the Product is considered an Extremely Hazardous Substance. The *Threshold Plan Quantity* is used on EHS Products if that Product's quantity is required to be reported below those of all the other EHS Product; usually 500 pounds of material. For that reason, if the *Threshold Plan Quantity* is greater than 500, it is not necessary to enter that information. The last column is used to record the *Threshold Report Quantity*.

## Seed/Lots

Detailed seed information may be entered on this tab along with Lot information. Quantities for Lot Numbers are

calculated on this tab by selecting **Calculate**.

Product Information for Chemicals -00 / Liberty SI280 2X2.5Gal Cas Us

Profile Safety Blend Setup Pricing Tier II **Seed / Lots** Mapping Recs

Seed Year  Brand Name  Purity %   Is Bio Tech

Variety  Processor Code  Inert %   Is Insect Resistant Material

Kind  Treatment Code  Weed %   Needs Field Coordinates

Origin  Seed Size  Germ %  Test Date

Trait  Order Quantity Multiple  Hard %  Crop

	Lot Number	Quantity	Inactive	Expire Date
1	<input type="text" value="▶"/>		<input type="checkbox"/>	
2			<input type="checkbox"/>	
3			<input type="checkbox"/>	
4			<input type="checkbox"/>	
5			<input type="checkbox"/>	
6			<input type="checkbox"/>	

- **Is Bio Tech** – Check this option if the seed being entered has some type of biological insect or disease resistance.
- **Is Insect Resistant Material** – Check this option if the Product is insect resistant from a seed treatment or from a biological standpoint.

## Mapping Recs

The information on this tab is used only if generating Product recommendations in the Mapping program. By filling out this tab, the Product is available in Mapping for fulfilling nutrient recommendations.

- **Product Category** – Choose the Product Category for each Product.
- **Code** – This code will only be used in Mapping.
- **Description** – This description is only used in Mapping.
- **Product Form** – Choose the form for this Product from the list. The options are *Unknown, Liquid, Dry, Unit,* and *Service*.
- **<Agvance Sky Mapping Product Name>** – SKY Mapping Products can be linked with Agvance Products. Double-clicking in this text field will attempt an automatic link by Agrian ID. If a Product is not found or is already linked, it will allow the option to select from all SKY Mapping Products. Additionally, select in this field and press **Delete** on the keyboard to remove the link. For more information on linking Products, see [here](#).

<Agvance Sky Mapping Product Name>

**Note:** This option is only available to databases linked to SKY Mapping at *Hub / Setup / Company Preferences*.