

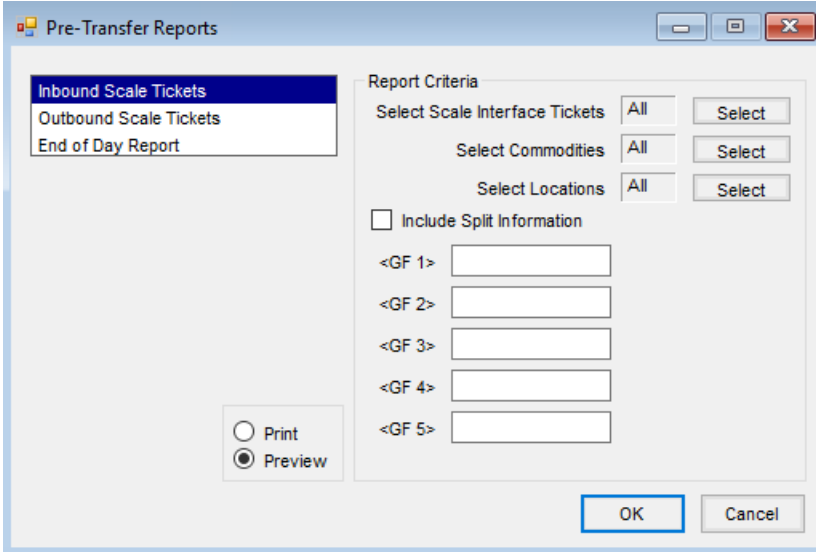
Grain Scale Reports

Last Modified on 05/22/2024 3:15 pm CDT

Grain Scale reports are found at *Hub / Utilities / Agvance Grain Scale Interface / Reports / Pre-Transfer Reports*.

Inbound Scale Tickets

This report shows Grade Factors and split information on the Scale Ticket before transferring the Scale Tickets to the Agvance Grain module.



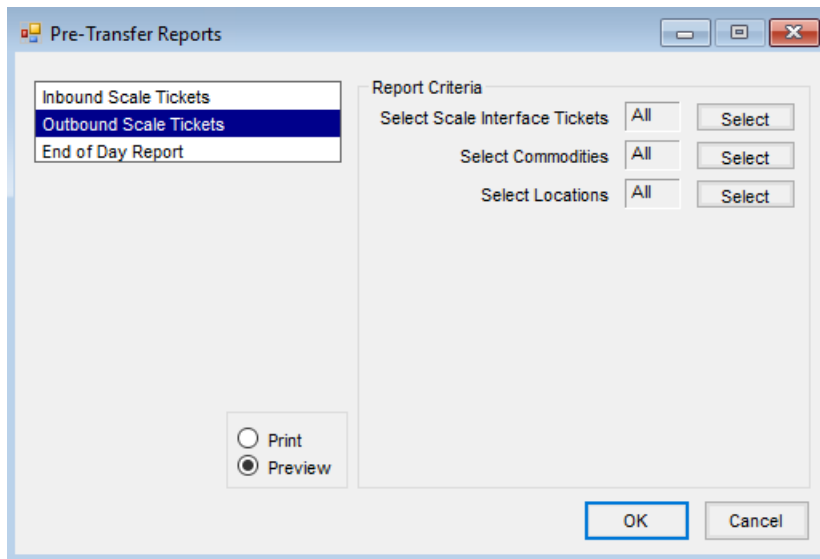
The screenshot shows a software dialog box titled "Pre-Transfer Reports". On the left, a list contains "Inbound Scale Tickets" (highlighted), "Outbound Scale Tickets", and "End of Day Report". The main area is titled "Report Criteria" and contains the following elements:

- Three rows, each with a label ("Select Scale Interface Tickets", "Select Commodities", "Select Locations"), a dropdown menu set to "All", and a "Select" button.
- An unchecked checkbox labeled "Include Split Information".
- Five input fields, each preceded by a label "<GF 1>" through "<GF 5>".
- At the bottom left, two radio buttons: "Print" (unselected) and "Preview" (selected).
- At the bottom right, "OK" and "Cancel" buttons.

- **Select Scale Interface Tickets** – This defaults to *All* Scale Interface Tickets, but optionally choose **Select** to select Scale Tickets for the report.
- **Select Commodities** – All Commodities are included on the report, or optionally choose **Select** to select specific Commodities of the Scale Tickets to be included.
- **Select Locations** – Choose **Select** to specify the Location of the Scale Tickets for the report. The default is *All*.
- **Include Split Information** – If Customer split information from the Scale Ticket should be included on the report, select this option.
- **GF 1-5** – Select the Grade Factors to be included on the report. The Grade Factors and their results print on the report.

Outbound Scale Tickets

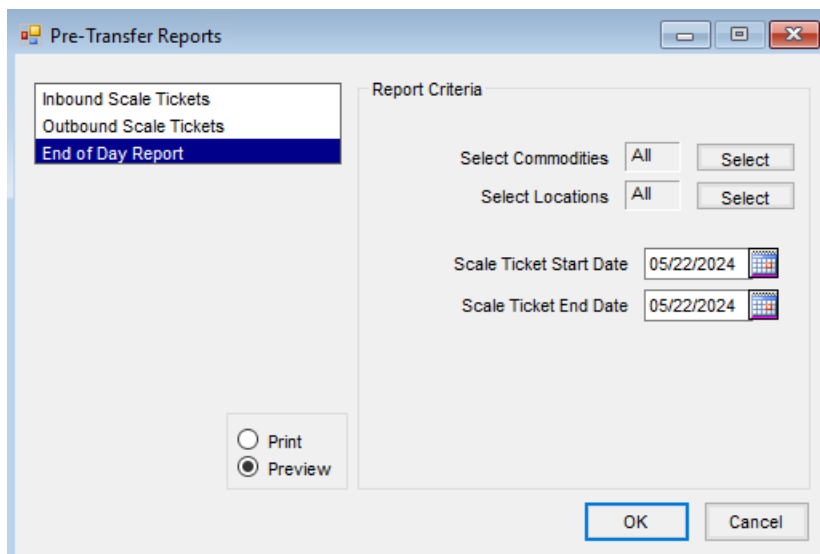
This report shows basic information on the shipments before transferring the Scale Tickets to the Agvance Grain module.



- **Select Scale Interface Tickets** – This defaults to include *All* Scale Interface Tickets on the report. Optionally choose **Select** to choose specific Scale Tickets for the report.
- **Select Commodities** – Optionally choose **Select** to choose the Commodity of the Scale Tickets for the report. The default is *All*.
- **Select Locations** – Specific Locations may be selected for the report by choosing **Select** to filter the Scale Tickets. *All* Locations default.

End of Day Report

This report shows information from the Scale Tickets, both transferred and not transferred, that fall within the selected date range. The report has an *Inbound* and *Outbound* section, which is grouped by Commodity/Location, and includes the *Ticket Number*, *Ticket Date*, *Commodity*, and *Gross Units*. There is Commodity/Location totaling of the *Gross Units*.



- **Select Commodities** – Optionally choose **Select** to choose the Commodity of the Scale Tickets for the report. The default is *All*.
- **Select Locations** – Specific Locations may be chosen for the report by choosing **Select**. *All* Locations default.
- **Scale Ticket Start Date** – Enter the beginning date for the Scale Tickets.
- **Scale Ticket End Date** – Enter the ending date for the range of Scale Tickets.