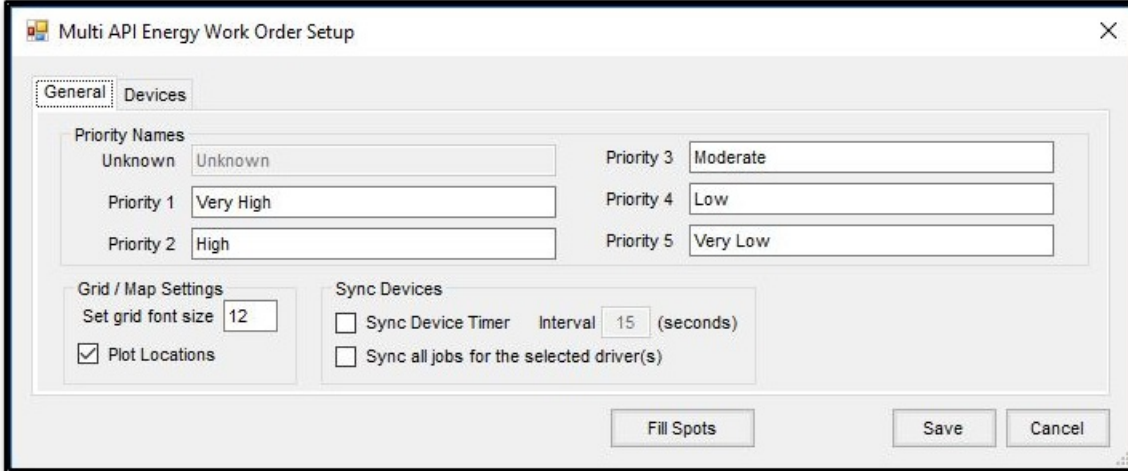


Energy Dispatch Setup

Last Modified on 02/02/2022 1:11 pm CST

General



The screenshot shows the 'Multi API Energy Work Order Setup' window with the 'General' tab selected. The window contains several sections for configuration:

- Priority Names:** A grid of text boxes for assigning names to priority levels. The values shown are: Unknown (Unknown), Priority 1 (Very High), Priority 2 (High), Priority 3 (Moderate), Priority 4 (Low), and Priority 5 (Very Low).
- Grid / Map Settings:** Includes a 'Set grid font size' field with the value '12' and a checked checkbox for 'Plot Locations'.
- Sync Devices:** Includes two unchecked checkboxes: 'Sync Device Timer' and 'Sync all jobs for the selected driver(s)'. The 'Sync Device Timer' checkbox has an 'Interval' field set to '15 (seconds)'.

At the bottom of the window, there are three buttons: 'Fill Spots', 'Save', and 'Cancel'.

Setting up Energy Dispatch Priorities

Priorities may be assigned to Product Delivery Orders and Maintenance Work Orders on the *General* tab of the *Energy Work Orders* grid. The priorities may be given specific names to be more meaningful to the users. This setup is found on the *Multi API Energy Work Order Setup* window. Enter text into the field that corresponds with each priority number. Select **Save** when finished.

Set Grid / Map Settings

The font size in the *Energy Work Orders* grid may be adjusted to accommodate various sized computer monitors. On the *General* tab of the *Multi API Energy Work Order Setup* window, use the *Set grid font size* field to enter a numeric font size. Select **Save** to apply this font size to the grid.

The *Plot Locations* option plots the company locations on the map if the locations are geo-coded in the Agvance database.

Sync Devices

Select **Sync Device Timer** if the Energy tickets with a *Ready* status should automatically sync to the device specified on the job. Enter the *Interval* in seconds for this automatic sync to occur.

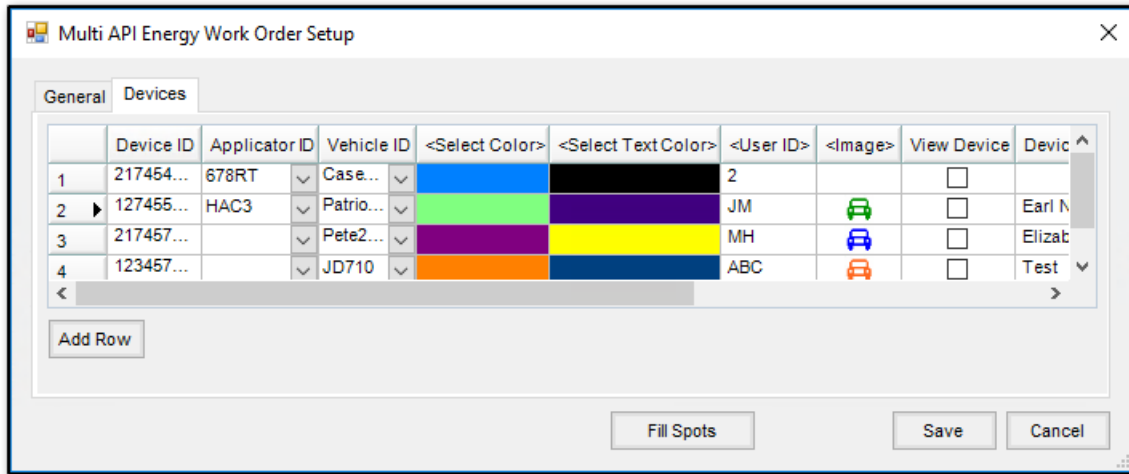
With the *Sync all jobs for the selected driver(s)* option selected, the sync process syncs selected jobs and also automatically looks for other jobs assigned to the same drivers and syncs those as well.

Fill Spots

Depot fill spots may be added, edited, or deleted from the *Fill Spots* window. Select **Add Fill Spot** to add a line to the grid. Enter the *ID*, *Name*, and address information to the line in the grid. Optionally, select **Map** to display a map, then

right-click on the desired location on the map to place a location. Select **OK** to populate the Lat and Lon on the *Fill Spot* line in the grid. Once information has been verified, select **Save**.

Devices



Devices used to communicate Energy job information to drivers are set on the *Devices* tab which allows tracking these devices using *Live Map*. Select **Add Row** to add a row where information is then entered. Enter a *Device ID*, which is the device phone number, and then optionally assign an *Application ID* and/or *Vehicle ID*. A color may be selected for the device as well as a text color selection. If selected, these colors display for the device on the *Live Map*. A *User ID* and *Image* may also be assigned to the device. The *View Device* option must be selected for the device be show on the *Live Map*. If a *Device Alias* is entered, it displays on the *Live Map* instead of displaying the *Device ID*. Select *Android* or *iOS* as the *Device Type*.